

Video Shield

Day

User Guide

Extending the power of
your senses

VIDEO SHIELD

Day

User Guide

Copyright © Video Domain Technologies Ltd. 1997

The information in this manual was accurate and reliable at the time of its release. However, Video Domain Technologies Ltd. reserves the right to change the specifications of the product described in this manual without notice at any time. As such, the descriptions and data included in this document may not be current. Video Domain Technologies Ltd. assumes no responsibility for any inconsistencies between the actual product and this manual's description of it. Any party electing to use this manual does so with the full knowledge of the possibility of such inconsistencies and takes full responsibility for any consequences that may arise while installing and/or using this product.

Video Domain Technologies Ltd. holds the copyright to this manual. All rights are reserved. No part of this publication may be reproduced or transmitted in any form or by any means without prior written consent from Video Domain Technologies Ltd.

Disclaimer

Video Domain Technologies Ltd. make no warranties regarding the content of this document. Video Domain Technologies Ltd. reserves the right to alter, modify and revise the specification without notice. Video Domain Technologies Ltd. assumes no responsibility for any errors contained herein.

The customer should note that in the field of multimedia there are a number of patents held by various parties. It is the responsibility of the user to assure that a particular implementation does not infringe on those patents. Video Domain Technologies Ltd. does not indemnify the user from any patent or intellectual property infringement.

Registered Trademarks

IBM PC is a registered trademark of the International Business Machines Corporation.

Windows 95 is the registered trademark of the Microsoft Corporation.

All other proprietary names mentioned in this manual are the trademarks of their respective owners.



VIDEO DOMAIN

Video Domain Technologies Ltd.

57 Hamlacha St., Holon 58855, ISRAEL

Phone: (972) 3 5595919

Fax: (972) 3 5561936

E-Mail: vdomain@netmedia.net.il

CONTENTS

CHAPTER 1 READ THIS FIRST	1-1
1.1. What is Included in This Package?	1-2
1.2. About This Manual	1-2
1.3. How to Use This Manual	1-3
1.4. Conventions Used in This Manual	1-3
CHAPTER 2 OVERVIEW	2-1
2.1. What is Video Shield?	2-2
2.2. What Can You Do With Video Shield?	2-3
2.2.1. Day Mode	2-4
2.2.2. Night Mode	2-4
2.3. What Equipment Do You Need?	2-5
CHAPTER 3 INSTALLING VIDEO SHIELD	3-1
3.1. Pre-Installation Requirements	3-2
3.2. Installation	3-2
CHAPTER 4 GETTING STARTED	4-1
4.1. Opening Video Shield Day	4-2
4.1.1. Directly Opening Video Shield Day	4-2
4.1.2. Switching from Night Mode to Day Mode	4-2
4.2. Using Video Shield Day	4-3
4.3. The Main Menu	4-4

4.4. Closing Video Shield Day	4-4
4.4.1. Switching to Night Mode	4-5
4.4.2. Exiting the Program	4-5
CHAPTER 5 SETTINGS	5-1
5.1. The Setup Submenu	5-2
5.2. Configuring Cameras and Alarms	5-2
5.3. Cameras and Alarms Tabs	5-3
5.3.1. Card Tab	5-4
5.3.2. Advanced Tab	5-6
5.4. Controlling Access	5-8
5.4.1. Adding and Removing Users	5-10
5.4.2. Modifying Passwords and Privileges	5-11
CHAPTER 6 OPERATIONS	6-1
6.1. Introduction	6-2
6.2. Recording Alarms	6-2
6.3. Monitoring Cameras	6-2
6.3.1. The Cameras and Relays Toolbar	6-4
6.3.2. Automatic Camera Switching	6-5
6.3.3. Adjusting the Video Display	6-5
6.4. Debriefing	6-7
APPENDIX A OPTIMIZING VIDEO DISPLAY	A-1
A.1. Lighting	A-2
A.2. Using Linear VGA	A-2

FIGURES

Figure 1: Operating in Day Mode	2-3
Figure 2: Operating in Night Mode	2-4
Figure 3: Run Dialog Box	3-2
Figure 4: Video Shield Day Icon in Traybar	4-3
Figure 5: The Main Menu	4-3
Figure 6: Setup Submenu	5-2
Figure 7: Sample Card Tab	5-4
Figure 8: Advanced Tab	5-7
Figure 9: Users Dialog Box	5-9
Figure 10: Add User Dialog Box	5-10
Figure 11: User's Properties Dialog Box	5-11
Figure 12: Viewing a Camera	6-2
Figure 13: Viewing Video Window	6-3
Figure 14: Cameras and Relays Toolbar	6-4
Figure 15: Video Properties Dialog Box	6-6
Figure 16: Sample Debrief Dialog Box	6-8

TABLES

Table 1: System Requirements	2-5
-------------------------------------	-----

Chapter 1
READ THIS FIRST

1.1. WHAT IS INCLUDED IN THIS PACKAGE?

- Two 3½" diskettes labeled **Video Shield** or **Video Shield Plus** *Disk 1* and *Disk 2*.
- One manual entitled **Video Shield Day User Guide**.
- One manual entitled **Video Shield Night User Guide**. (*Only with Video Shield Plus*)
- One or more **VideoJET** card(s) as ordered.
- One 3½" diskette labeled **VideoJET** Windows 95 Drivers.
- One **VideoJET Hardware Installation Manual**.
- Optional accessories, e.g. video cameras, external inputs/outputs adapter(s), etc.

1.2. ABOUT THIS MANUAL

This is the user manual for all software-based aspects of Video Shield Day.

This manual includes:

- A general description of the system and system requirements.
- Directions for installing and setting up the software.
- Directions for using the Video Shield Day application.

For complete information about Video Shield hardware and hardware installation, please consult the **VideoJET Hardware Installation Manual**.

For complete information about software installation and operation of Video Shield Night, please consult the **Video Shield Night User Guide**.

1.3. HOW TO USE THIS MANUAL

Since this is not a long manual, we recommend you start at the beginning and read right through to the end before using Video Shield Day. That way, you may avoid making needless experiments.

1.4. CONVENTIONS USED IN THIS MANUAL

There are a few conventions employed in this manual to convey frequently used concepts. These conventions are:

Local Site: Applies when you are located at a protected site where you have already installed one or more *VideoJET* cards with attached camera(s). At the local site, you can view video from the cameras as well as accept remote video calls. (You can only run Video Shield Day at a local site.)

Remote Site: Applies when you are **not** located at a protected site and you do **not** have any special hardware on your computer. At the remote site you can dial the local site and view video from the remote cameras as well as receive alarm calls automatically.

Day Mode: Applies when you view the live video from the attached camera(s) at a local site. You can receive direct alarm notification as well as automatically record your video alarm events.

Night Mode: Applies when you enable a remote site(s) to connect with and view the video of the local site's attached cameras. At the same time, you enable the local site to automatically dial a remote site(s) upon a detected alarm.

Chapter 2

OVERVIEW

2.1. WHAT IS VIDEO SHIELD?

Video Shield is a product family that provides an affordable solution to desktop video monitoring, capture, and remote alarm verification over ordinary analog telephone lines. It is an expandable system that can adapt to the increasing security requirements of a site.

The product consists of one or more *VideoJET* adapters and application software.

The *VideoJET* is a half-size PCI-bus board to which up to six cameras may be attached.

The application software comes in two packages: **Video Shield** and **Video Shield Plus**. **Video Shield** is the software for Day mode only. **Video Shield Plus** is the software for both Day mode and Night mode.

The main features of these two packages are:

Video Shield

- Automatic pop-up video window on alarm activation.
- Multiple simultaneous live video windows on the PC monitor.
- Switching between six different cameras at each live video window.
- Six alarm inputs per *VideoJET* adapter for automatic video viewing and image recording.
- Three relay outputs per *VideoJET* adapter for controlling external accessories such as lights, sirens, etc.
- Optional user-password protection.

Video Shield Plus (Additional Features)

- Remote live video viewing.
- Remote viewing of recorded images and alarm data.
- Remote activation of relay outputs.
- Auto-dialing to a remote station.

2.2. WHAT CAN YOU DO WITH VIDEO SHIELD?

Video Shield operates in two modes: **Day** mode and **Night** mode. To clarify these modes, let us take the example of using Video Shield to protect your office. In Day mode you are at work in the office. In Night mode you have gone home.

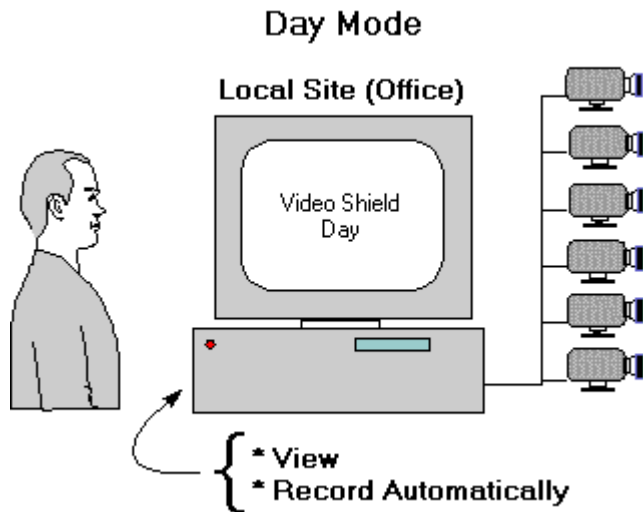


Figure 1: Operating in Day Mode

2.2.1. Day Mode

After launching Video Shield in Day mode, you view live video from cameras attached to your computer. You may be working on any computer application while simultaneously keeping an eye on zones that you want to secure or protect.

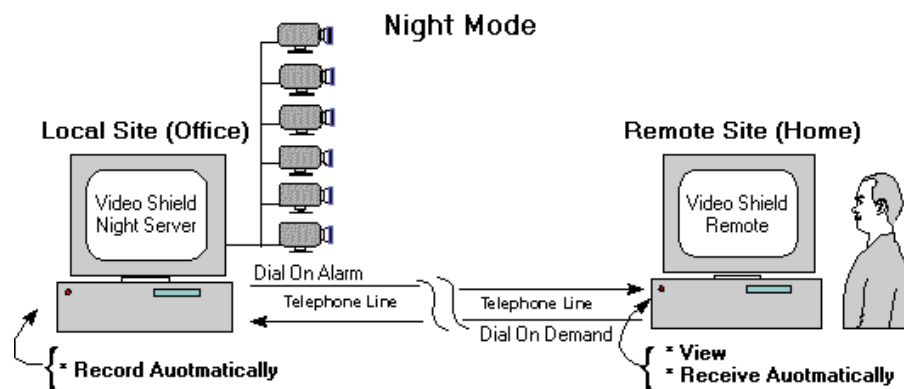


Figure 2: Operating in Night Mode

2.2.2. Night Mode

Before going home, you switch from Day mode to Night mode. This invokes the Video Shield Night Server application. Thereafter, whenever an alarm goes off in the office, Video Shield dials your home. In addition, you can connect to your office at any time to view those zones that Video Shield is protecting using the Video Shield Remote application.

2.3. WHAT EQUIPMENT DO YOU NEED?

Table 1: System Requirements

CPU	Pentium 90 or higher is recommended.
RAM	Minimum of 8 MB.
Graphic VGA Accelerator	For maximum performance, a PCI graphic accelerator with linear addressing capabilities is recommended. For more details, please refer to the Hardware Installation Manual.
<i>VideoJET</i> card	At least one.
Video Camera	Any PAL or NTSC video standard compliant model.
Operating System	Windows 95.

Chapter 3
INSTALLING VIDEO SHIELD

3.1. PRE-INSTALLATION REQUIREMENTS

Installing Video Shield Day is quick and simple. Nevertheless, you should check a couple of items before you start:

- **Camera and VideoJET Adapter:** You **must** have at least one *VideoJET* card attached to your computer and at least one camera attached to the *VideoJET* card.
- **Modem:** Your modem must be properly installed if you want to employ Video Shield Night as well

Note: The *VideoJET* card must be properly installed prior to using Video Shield Day. For more detail, please refer to the **VideoJET Hardware Installation Manual**.

3.2. INSTALLATION

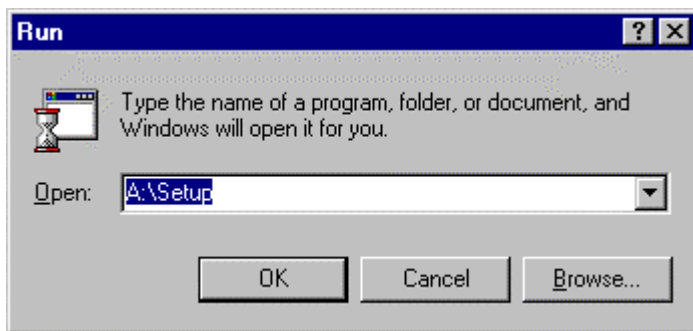


Figure 3: Run Dialog Box

To install Video Shield Day:

1. Insert **Disk 1** of Video Shield or Video Shield Plus into your floppy drive, and choose **Run** from the Windows 95 Start menu. The Run dialog box opens. (See Figure 3 *Run Dialog Box*.)
2. Type “A (or B) : \Setup”, and press **OK**. Setup prepares to install the necessary files on your computer.
3. If you are installing the Video Shield Plus package, Setup asks you to specify if your installation is at a local or a remote site. Choosing **Local** installs the Video Shield Day and Video Shield Night Server applications. Choosing **Remote** installs the Video Shield Remote application. If you are installing the Video Shield package, skip this step.
4. Answer the few questions and follow the simple instructions while installation is in progress. Once you complete this process, Video Shield Day is installed on your computer. A folder called Video Shield or Video Shield Plus appears on your Desktop.

Note: To uninstall Video Shield, use the Add/Remove Programs application in the Windows Control Panel. Select **Video Shield** (or **Video Shield Plus**), and press the **Add/Remove** button.

≈Tip≈ Video Shield only protects your site when Video Shield is running. To maximize your protection, Video Shield should remain open all the time. Therefore, every time you start or restart Windows 95, Video

Shield should start as well. Accordingly, you may find it convenient to accept the installation option that places Video Shield in your StartUp folder.

Chapter 4
GETTING STARTED

4.1. OPENING VIDEO SHIELD DAY

There are two ways to open Video Shield Day depending on whether or not Video Shield Night Server is already running.


4.1.1. Directly Opening Video Shield Day

If Video Shield Night Server is **not** currently running, you can open Video Shield Day directly.

To directly open Video Shield Day:

1. Double-click the **Video Shield** or **Video Shield Plus** folder on your Windows Desktop. The folder opens.
2. Double click the **Video Shield Day** icon. Video Shield Day opens.

or

- Go to the **Programs** menu off the **Start** button on your Windows Desktop. Choose the **Video Shield Day** icon  from the **Video Shield** or **Video Shield Plus** folder. Video Shield Day opens.

4.1.2. Switching from Night Mode to Day Mode

If Video Shield Night Server is currently running, you can open Video Shield Day by switching from Night mode to Day mode. For instructions on how to switch from Night mode to Day mode in Video Shield Night Server, please see the **Video Shield Night User Guide**.

4.2. USING VIDEO SHIELD DAY

When you launch Video Shield Day, the Video Shield icon appears on the far right corner of the Windows taskbar (in the portion commonly referred to as the “tray” or “traybar”).



Figure 4: Video Shield Day Icon in Traybar

Video Shield Day is a very easy program to operate. You initiate all of the main operations from that Video Shield icon.

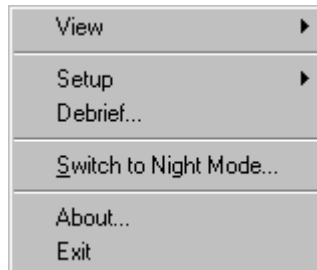


Figure 5: The Main Menu

To use Video Shield Day:

1. Click the Video Shield icon in the traybar. The main menu appears. (See Figure 5 *The Main Menu*.)
2. Choose the operation you want to carry out from the main menu by clicking on the item. Video Shield Day initiates that operation.

4.3. THE MAIN MENU

There are seven headings on the main menu:

- **View:** Lets you monitor all the cameras attached to your computer.
- **Setup:** Lets you to configure the settings for cameras, alarms, and passwords.
- **Debrief:** Lets you review all of the alarm events.
- **Switch to Night Mode:** Switches Video Shield from Day mode to Night mode. (This feature is only available if you have installed the **Video Shield Plus** package.)
- **Help:** Provides this manual in a convenient help format.
- **About:** Specifies the version and registration details.
- **Exit:** Closes Video Shield Day.

4.4. CLOSING VIDEO SHIELD DAY

Video Shield is designed to run non-stop on your computer. Even when no one monitors your computer, Video Shield records all alarm events and stores snapshots from those events for debriefing. The same occurs whether you are running Video Shield Day or Video Shield Night Server. Therefore, under normal circumstances you may never want to close Video Shield Day except to switch from Day mode to Night mode (Video Shield Night Server).

There are two ways to close Video Shield Day depending on whether you have installed Video Shield Night as well.

4.4.1. Switching to Night Mode

To switch to Night mode:

1. Click the Video Shield icon in the traybar. The main menu appears.
2. Click **Switch to Night Mode**. Video Shield Day closes, and Video Shield Night Server opens.

Note: This option is only available when you have installed the **Video Shield Plus** package that includes both Video Shield Day and Video Shield Night.

4.4.2. Exiting the Program

To exit Video Shield Day (without starting Video Shield Night):

1. Click the Video Shield icon in the traybar. The main menu appears.
2. Click **Exit**. Video Shield Day closes.

Note: When you exit Video Shield Day by this method, Video Shield no longer protects your site.

Chapter 5
SETTINGS

5.1. THE SETUP SUBMENU

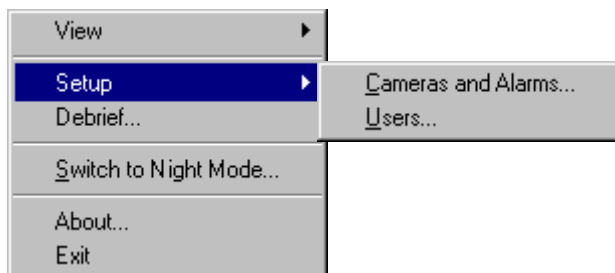


Figure 6: Setup Submenu

The Video Shield Day setup applies to:

- Cameras and alarms
- Users

When you set up cameras and alarms, you determine how the cameras respond to alarms, the degree of resolution of the snapshots, how the relays operate, and the speed of automatic camera switching if enabled.

When you set up users, you enable password protection for virtually every operation of Video Shield Day, and thereafter only authorized individuals can use the program.

5.2. CONFIGURING CAMERAS AND ALARMS

To configure cameras and alarms:

1. Click the Video Shield icon in the traybar. The main menu appears. (See Figure 5 *The Main Menu.*)

2. Select **Setup**. When the Setup submenu appears, click **Cameras and Alarms**. After confirming your user name and password, the Cameras and Alarms Setup dialog box opens.
3. Specify the desired settings under the various tabs of the Cameras and Alarms Setup dialog box. Then press **OK** to save the settings and complete the operation. (Press **Cancel** if you decide not to change any of the current settings.)

Note: If you have not yet configured password protection or you do not intend to configure password protection, simply press **OK** any time you are prompted for a password. Video Shield assumes that you have the highest level of security privilege.

5.3. CAMERAS AND ALARMS TABS

Within the Cameras and Alarms Setup dialog box there are two types of tabs:

- Card tab(s) – to configure camera, relay, and card properties.
*There is one Card tab for each **VideoJET** card you have installed.*
- Advanced tab – to configure snapshots and camera switching.

For details about the settings contained in the Cameras and Alarms Setup dialog box, see 5.3.1. *Card Tab* and 5.3.2. *Advanced Tab*.

5.3.1. Card Tab

On the Card tab, you set up essential properties of your cameras, your relays, and your card.

Camera Name:	Alarm Popup?	Record Events?	Events number:	Frames number:	Interval (Seconds):
Camera #1	<input checked="" type="checkbox"/>	<input checked="" type="checkbox"/>	3	3	3
Camera #2	<input checked="" type="checkbox"/>	<input checked="" type="checkbox"/>	3	3	3
Camera #3	<input checked="" type="checkbox"/>	<input checked="" type="checkbox"/>	3	3	3
Camera #4	<input checked="" type="checkbox"/>	<input checked="" type="checkbox"/>	3	3	3
Camera #5	<input checked="" type="checkbox"/>	<input checked="" type="checkbox"/>	3	3	3
Camera #6	<input checked="" type="checkbox"/>	<input checked="" type="checkbox"/>	3	3	3

Relay #1: Name: Relay #1, State relay?

Relay #2: Name: Relay #2, State relay?

Relay #3: Name: Relay #3, State relay?

Adapter Properties: Enter the adapter name: Group #1

Buttons: Set Defaults, OK, Cancel

Figure 7: Sample Card Tab

Camera Properties

Under *Camera Properties*, you can set the following parameters for the cameras to that specific card:

- **Camera Name:** You can specify a name for each of the cameras. For example, you might give a name like “Assembly Line” to a camera located in your factory.
- **Alarm Popup:** Check the Alarm Popup box if you want the video window to appear automatically whenever an alarm is detected. You can check this box for any or all of the cameras attached to the *VideoJET* card.
- **Record Events:** Check the Record Events box if you want to record events for a camera. You can check this box for any or all of the cameras attached to the *VideoJET* card.
- **Events Number:** If you have enabled the Record Events option for a camera, you may then specify the maximum number of events to be kept on your disk. When the limit is reached, Video Shield continues to record events, but it replaces the older events with the latest ones.
- **Frames Number:** If you have enabled the Record Events option for a camera, you may specify how many frames (snapshots) to store for each event.
- **Interval:** If you have enabled the Record Events option for a camera, you may specify the time gap (in seconds) between frames for recorded events.

Note: The *VideoJET* alarms are all configured as ‘normally closed’ inputs. To cause an alarm, a closed electronic circuit must be broken.

If you have not connected a sensor to an alarm input, Video Shield detects a constant state of alarm. Under these circumstances if you check either the Record Events or the Alarm Popup option, Video Shield continuously pops up and/or records alarms.

Relay

You can specify a name for each of the relays attached to your camera. For example if a particular relay turns on a siren, you could call it “Siren”.

For each of the relays you also have the option to set it as either a state relay or a temporary relay.

Card Properties

When you give a name to the card represented by a specific Card tab, that name also appears on the Card tab. It also appears in the View submenu (Figure 12 *Viewing a Camera*) and in the Debrief dialog box (Figure 16 *Sample Debrief Dialog Box*).

Set Defaults Button

The **Set Defaults** button restores the original values to all of the parameters on the Card tab of the Cameras and Alarms Setup dialog box. It does not affect any of the other Card tabs or the settings on the Advanced tab.

5.3.2. Advanced Tab

On the Advanced tab, you can refine the way your cameras function.

Snapshot Recording

This lets you determine the dimensions of the frame recorded to disk upon alarm.

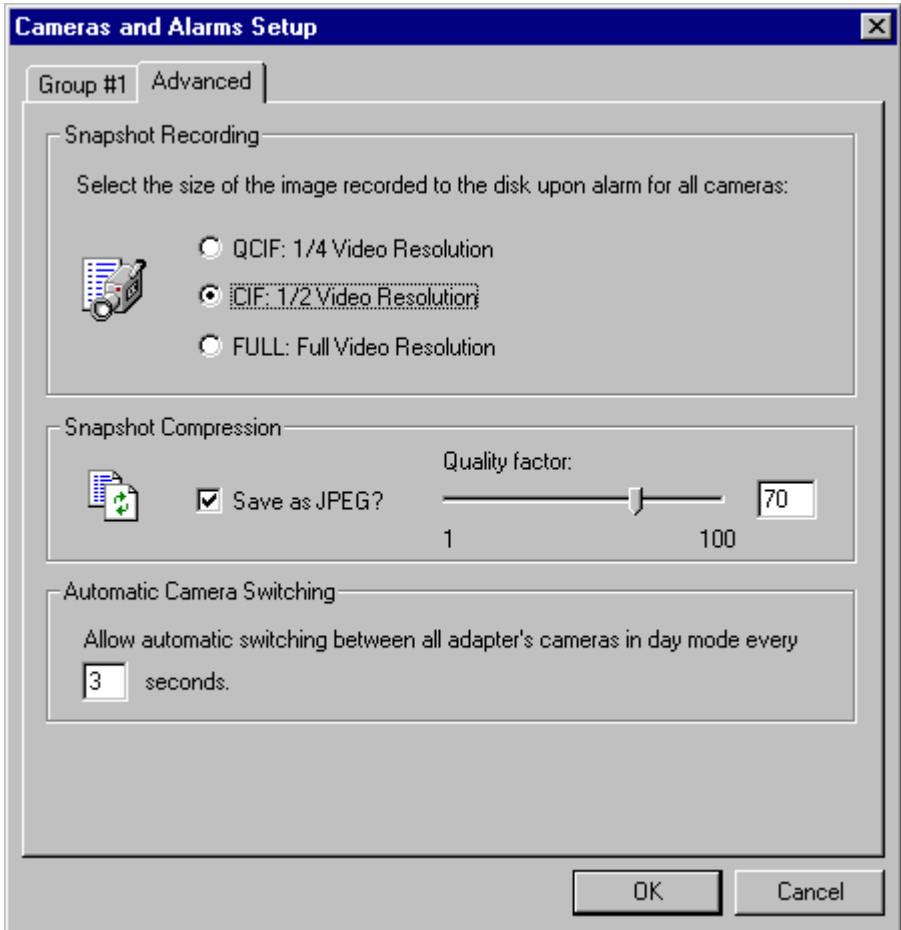


Figure 8: Advanced Tab

Snapshot Compression

This allows you to increase or decrease the quality of the snapshot and to save it as a JPEG image.

Automatic Camera Switching

This sets the speed with which your cameras switch from one to the next. This does **not** enable camera switching. For instructions on how to enable camera switching, see 6.3.2. *Automatic Camera Switching*.

5.4. CONTROLLING ACCESS

An optional password protection feature provides the capacity to restrict access to local program actions like modifying your program setup and status. For example, once you enable password protection, no one can close Video Shield Day or switch between Day and Night modes without providing a proper password.

Video Shield offers three levels of users:

- Guests
- Users
- Administrators

Guests have the power only to view the video. They cannot modify any configuration settings.

Users have the additional power to modify configuration settings.

Administrators have the additional power to add and remove guests and users from the authorized access list.

To set up passwords and privileges:

1. Click the Video Shield icon in the traybar. The main menu appears. (See Figure 5 *The Main Menu*.)
2. Select **Setup**. When the Setup submenu appears, click **Users**. After confirming your user name and password, the Users dialog box opens.
3. Add, edit or remove passwords and privileges according to the instructions that follow. Then press **OK** to save the settings and complete the operation. (Press **Cancel** if you decide not to change any of the current settings.)

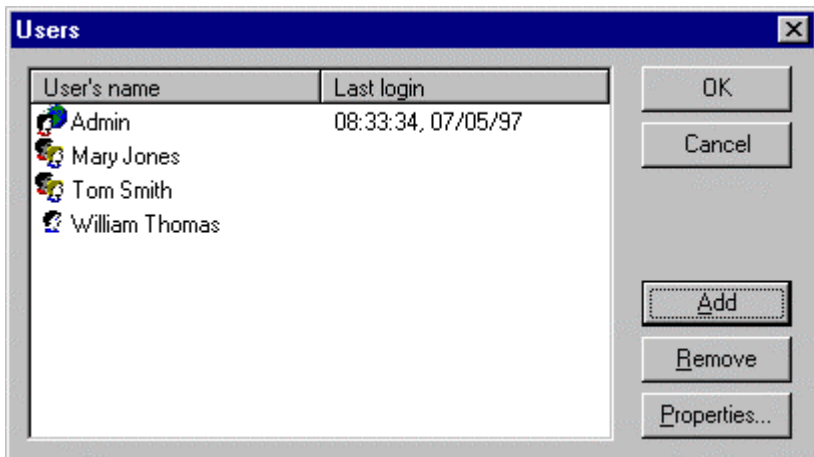


Figure 9: Users Dialog Box

Note: If you have no need for password protection, simply ignore the Users option within Setup on the main menu. Video Shield then treats each user as an administrator. You will still be

prompted for a password, but you have only to press **Enter** in reply.

5.4.1. Adding and Removing Users

Only Administrators have the power to add and remove users and guests.

To add a user or guest:

1. Press the **Add** button in the Users dialog box. The Add User dialog box opens.
2. Fill in the details for Name and Password, and assign the new user a privilege level (Administrator, User, or Guest). *You must confirm the password. Unless you type it identically, the **OK** button remains grayed out.*
3. Click **OK** to complete the operation. The new user's name enters the list in the Users dialog box.

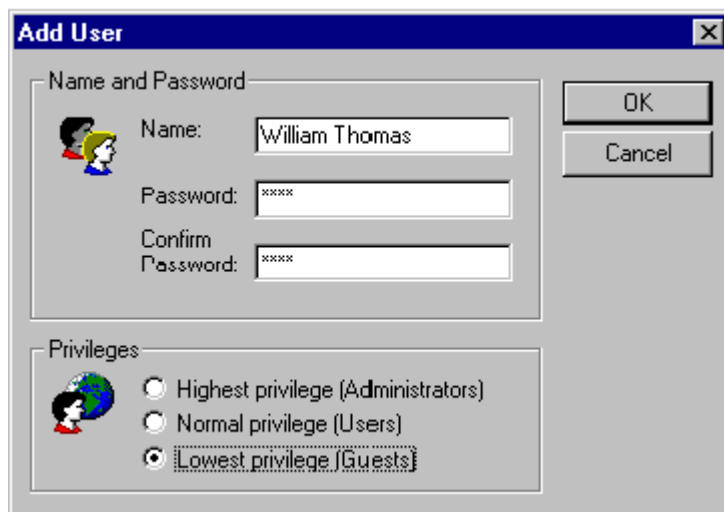


Figure 10: Add User Dialog Box

To remove a user or guest:

1. Select the user's name in the Users dialog box, and press the **Remove** button. Video Shield prompts you for confirmation of the action.
2. Press **Yes** to confirm the deletion. Press **No** to nullify the action.

5.4.2. Modifying Passwords and Privileges

Only Administrators have the power to modify passwords and privileges.

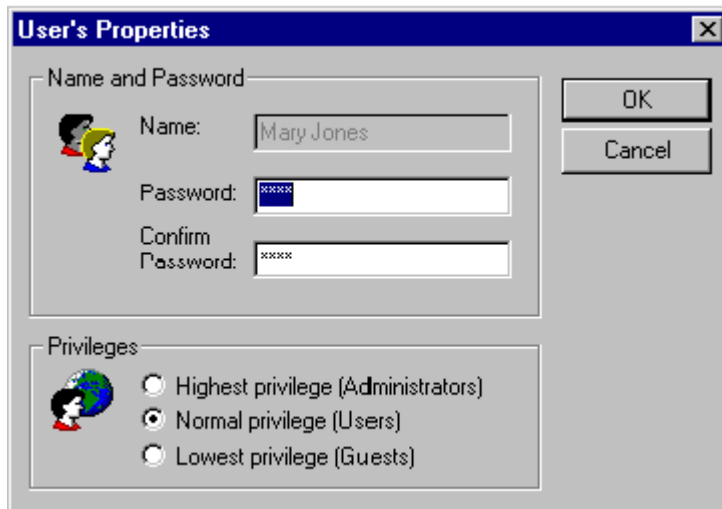


Figure 11: User's Properties Dialog Box

To modify the passwords or privileges of a user or guest:

1. Select the appropriate user's name from the list in the Users dialog box and press the **Properties** button. (Alternatively, you may simply double-click on the user's name.) The User's Properties dialog box opens.
2. Make the desired changes in either the password or the privileges and press **OK** to confirm the action.

Chapter 6
OPERATIONS

6.1. INTRODUCTION

Video Shield Day provides an easy and convenient way to:

- Record alarms.
- View cameras
- Activate relays
- Debrief events

6.2. RECORDING ALARMS

Video Shield records all alarms automatically.

You can customize the way Video Shield manages your cameras and alarms by modifying the appropriate settings. For more detail, see *5.2. Configuring Cameras and Alarms.*

6.3. MONITORING CAMERAS

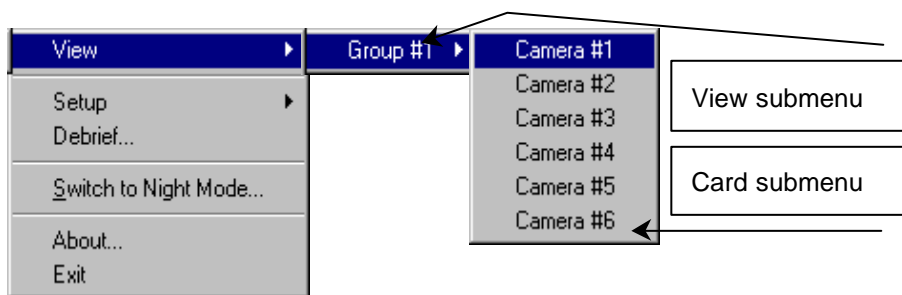


Figure 12: Viewing a Camera

To view a camera:

1. Click the Video Shield icon in the traybar. The main menu appears. (See Figure 5 *The Main Menu*.)
2. Select **View**. When the View submenu appears, select the card that contains the camera you want to view. When the Card submenu appears, click the appropriate camera. A window opens displaying live video from that camera. The Cameras and Relays toolbar opens at the same time.



Figure 13: Viewing Video Window

The following elements are found on the Video window toolbar:



When a camera records an alarm, the LCD Display lights the number of that camera.



The Auto-switch button lets you activate automatic camera switching and modify the speed of switching.







The Restore Toolbar button restores the Cameras and Relays toolbar in case you prefer to hide the toolbar when it is not in use.

6.3.1. The Cameras and Relays Toolbar



Figure 14: Cameras and Relays Toolbar

The Cameras and Relays toolbar lets you manually switch from camera to camera. With this toolbar you can also manually activate any of the relays. Just click on the desired camera button  or relay button .

Note: Every Video window has an associated Cameras and Relays toolbar. The Cameras and Relays toolbar cannot be closed so long as the Video window it belongs to remains open. However, if you do not want to use the toolbar, you can hide it by clicking the  in the top right corner of the toolbar. To restore the hidden toolbar, simply click the Restore Toolbar button  on the Video window toolbar.

≈Tip≈ Holding the mouse pointer over any of the Cameras and Relays toolbar buttons reveals the name you assigned to the associated camera or relay. This may help you to identify what each camera button reveals and what each relay button does.

6.3.2. Automatic Camera Switching

Automatic Camera Switching lets you monitor all of your cameras without having to manually switch between them. This allows you to concentrate more time on other applications you may be working in on your computer.

To activate Automatic Camera Switching:

- Click the **Auto-Switch** button. Then click **Auto Camera Switching**. Video Shield activates Automatic Camera Switching at the speed specified on the Advanced tab of the Cameras and Alarms Setup dialog box. (See the section on Automatic Camera Switching in 5.3.2. *Advanced Tab*.)

6.3.3. Adjusting the Video Display

You may be able to improve the quality of your video display by changing the video standard (PAL or NTSC) or by modifying brightness, contrast, hue, and/or saturation.

Video Standard

When you install Video Shield it automatically detects your cameras and sets the video standard to PAL or NTSC as needed. You can, however, manually change the standard or repeat the automatic detection process.

To adjust the video standard:

1. Right-click anywhere on the Video window. On the context menu that appears, click **Source**. The Video Properties dialog box opens.
2. Make the desired change to the video standard setting or press the **Auto Detect** button to let Video Shield establish the correct setting automatically.
3. Press **OK** to complete the operation and save your settings.

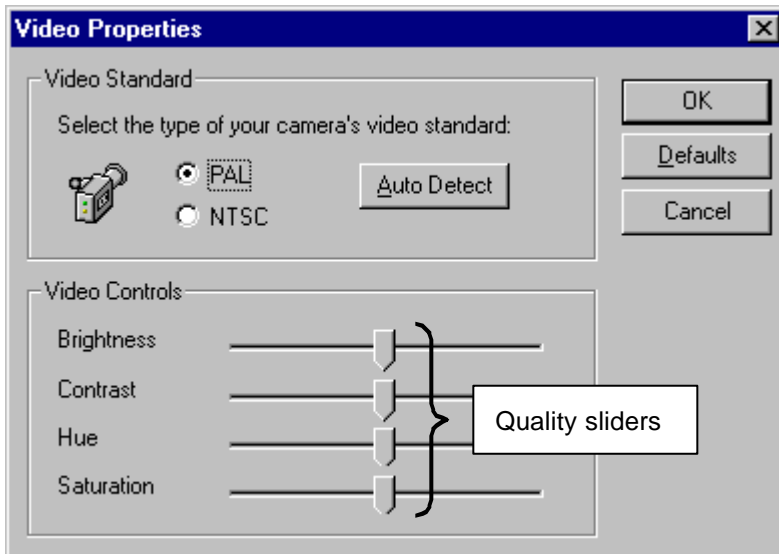


Figure 15: Video Properties Dialog Box

Video Controls

Sometimes an adjustment of brightness, contrast, hue, and/or saturation improves the quality of the video display.

To adjust brightness, contrast, hue, and/or saturation:

1. Right-click anywhere on the Video window. On the context menu that appears, click **Source**. The Video Properties dialog box opens.
2. Using the Quality sliders, make the desired changes to brightness, contrast, hue, and/or saturation. Then click **OK** to complete the operation and save the settings. Click **Cancel** to close the Video Properties dialog box without saving the changes.


≈Tip≈ To quickly restore the default settings for brightness, contrast, hue, and saturation, press the **Defaults** button.

6.4. DEBRIEFING

Video Shield stores a series of snapshots (frames) each time an alarm is triggered. The number of events that are recorded, the number of frames per event, and the interval between frames depends on the Camera Properties settings on the Card tab of the Cameras and Alarms Setup dialog box. (See the section on *Camera Properties* in 5.3.1. *Card Tab*.)

To debrief a camera:

1. Click the Video Shield icon in the traybar. The main menu appears. (See Figure 5 *The Main Menu*.)
2. Click **Debrief**. The Debrief dialog box opens.

3. Locate the alarm record by double clicking first the appropriate Card and then the appropriate camera attached to that card. A series of events scrolls down.
4. Click the desired event. The first snapshot appears in the Frame area of the Debrief dialog box.
5. Click the **Frame** button  to display the next snapshot captured in that event. Clicking the Frame button displays all the snapshots of that particular event one after another and starts from the first snapshot again when the series is complete.
6. When you finish viewing events, press the **Close** button to close the Debrief dialog box.

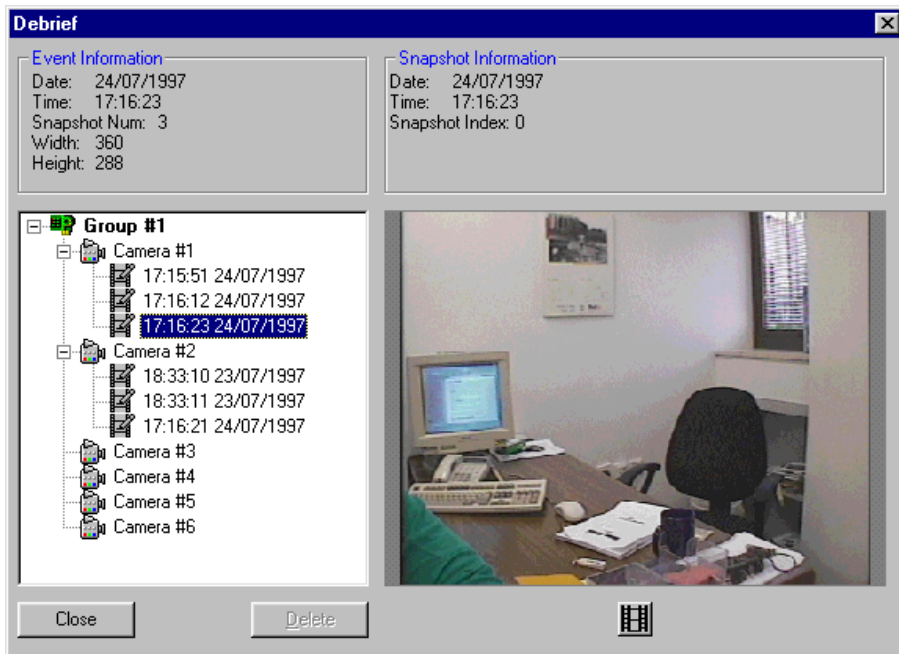


Figure 16: Sample Debrief Dialog Box

Appendix A

OPTIMIZING VIDEO DISPLAY

A.1. LIGHTING

In our experience, the most important factor affecting the quality of video images is the lighting.

If you have fluorescent lights, some cameras capture each flicker. Additionally, cameras are very sensitive to flickering that our eyes cannot see. Notice how computer screens seem to flicker madly when caught on video. We do not notice this with the naked eye.

Good natural lighting or a quartz halogen lamp slightly to the side of the camera subject can make a big difference. A matte background rather than a window or other reflective surface also helps.

A.2. USING LINEAR VGA

If you use a VGA card that supports linear addressing mode, you can view live video on your screen. Video Shield Day also lets you work with a non-linear VGA. In that case, however, the performance of the on-screen video display refresh rate decreases.

For further details and a complete list of recommended VGA cards, please refer to the **VideoJET Hardware Installation Manual**.